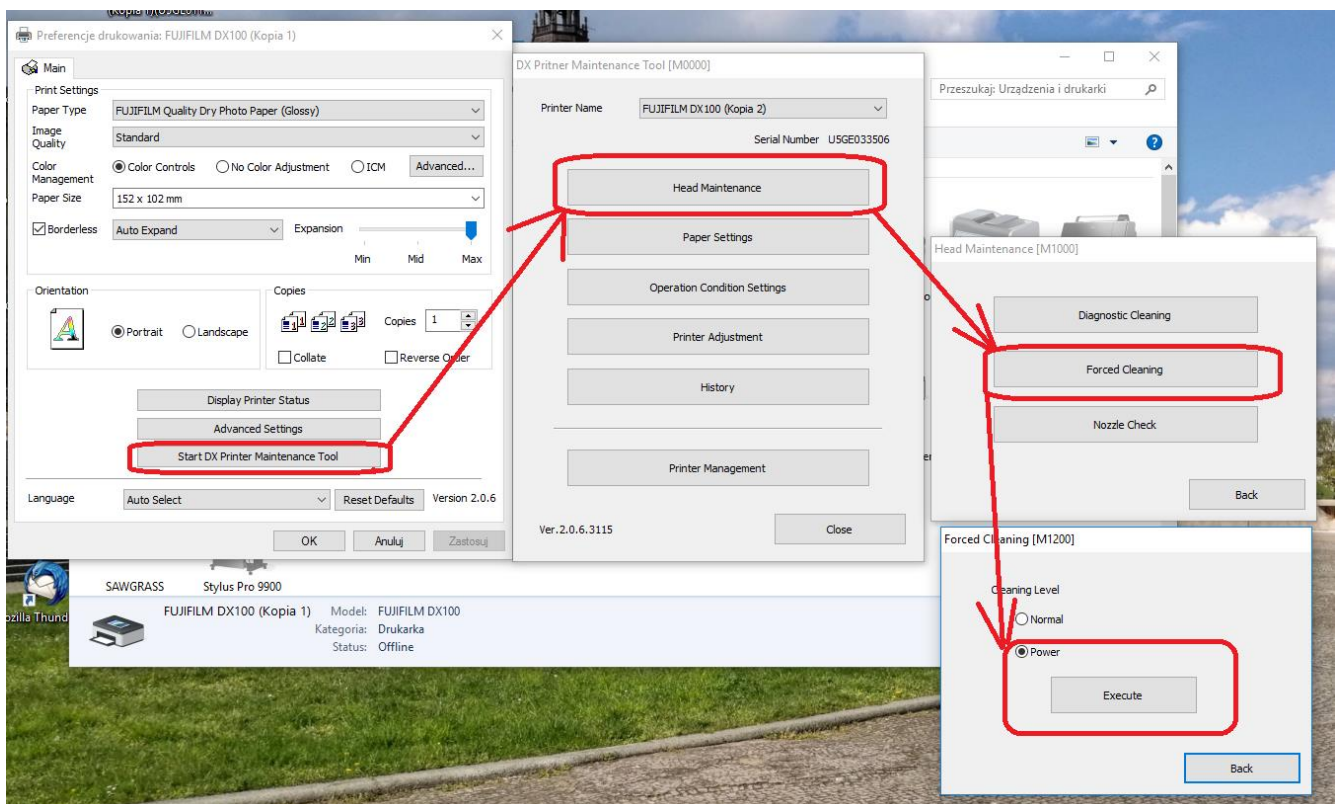


# Procedure for replacing ink in a Fujifilm DX100 or Epson SL-D700 printer

Before installing new cartridges it is recommended to check the condition of the print head in order to do this make a power cleaning and THEN a nozzle check:

1. enter the printing preferences and select accordingly:
  - Start DX Printer Maintenance Tool (Fujifilm printer)
  - Start SL Printer Maintenance Tool (Epson printer)

A window appears in which you should choose options as shown below.



2. Print a Nozzle Check
3. When all Nozzles do work correct install all 6 Solution cartridges
4. Continue to print as you used to do it (as there is still a lot of OEM ink in the ink paths)
5. When colors start to change do 2 power cleaning as given above
6. Install Solution ICC profiles – see instruction below

Epson printer users please note: should after placing Solution cartridges into the Epson printer orange lights turn on, just proceed and print one picture, the orange lights will turn off and you can continue with the replacing procedure.

## How to set ICC profiles in a dry-lab printer

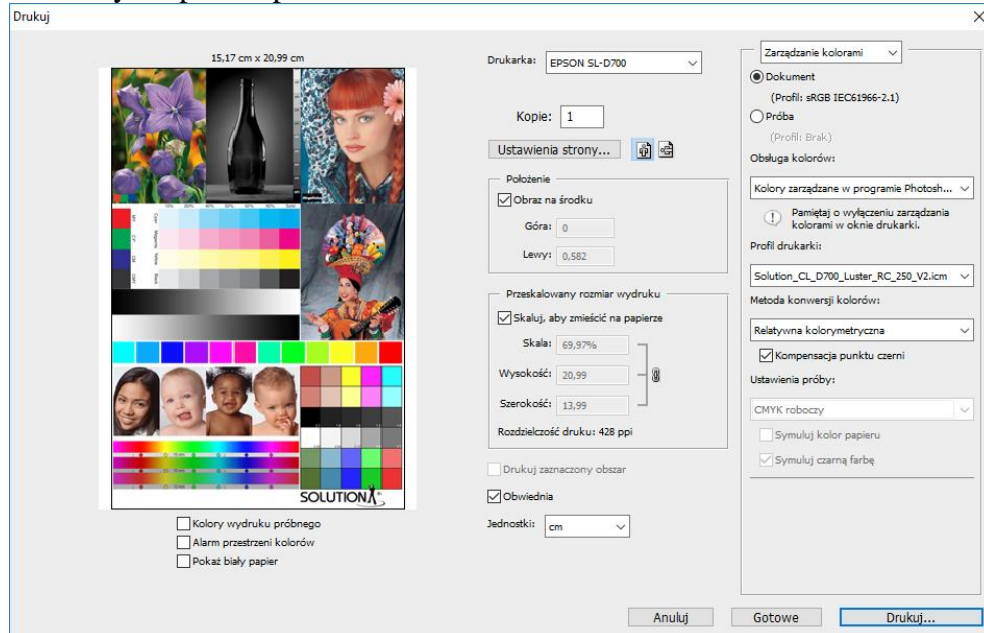
### 1. If you use Adobe Photoshop

Open the print window

Set your printer

In the Color Management set: **Photoshop Manages Color**

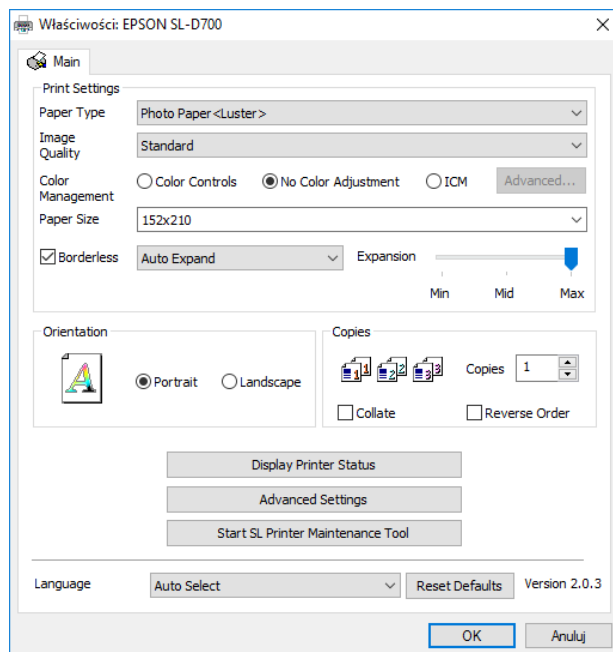
Choose your printer profile



Click the **Printer Setup** button.

In the printer dialog box chose your paper type, image quality, and set **No Color Adjustment**.

click the **OK** button



Click the **Print** button

## 2. If you use another software

In this case all settings you do set in the printer driver.

Choose the control panel

Choose devices and printers

Click the right mouse button at your printer icon and chose the **printer settings**.

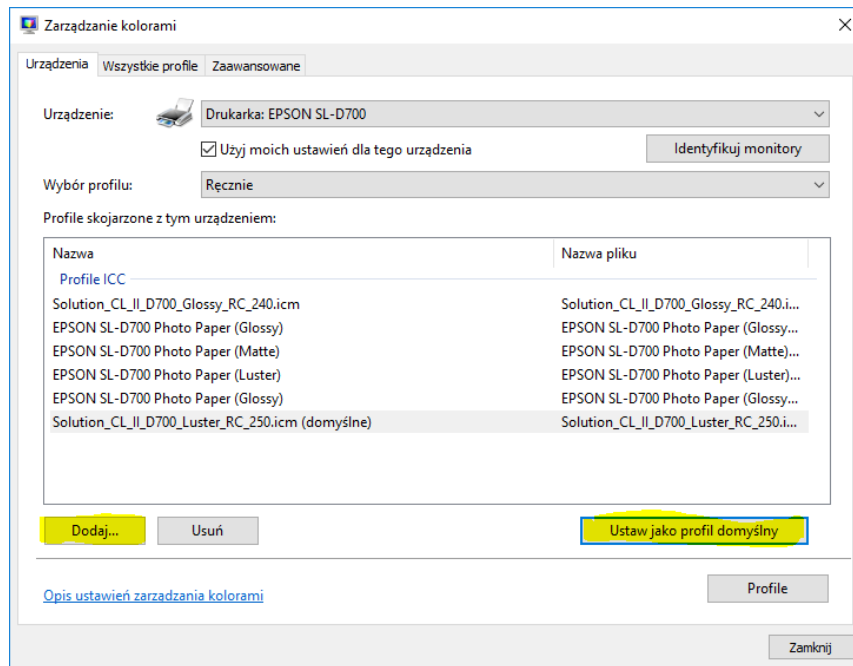
Click the **Color Management** tab, and please confirm your choice.

Set your printer and set the profile selection as **Manually**.

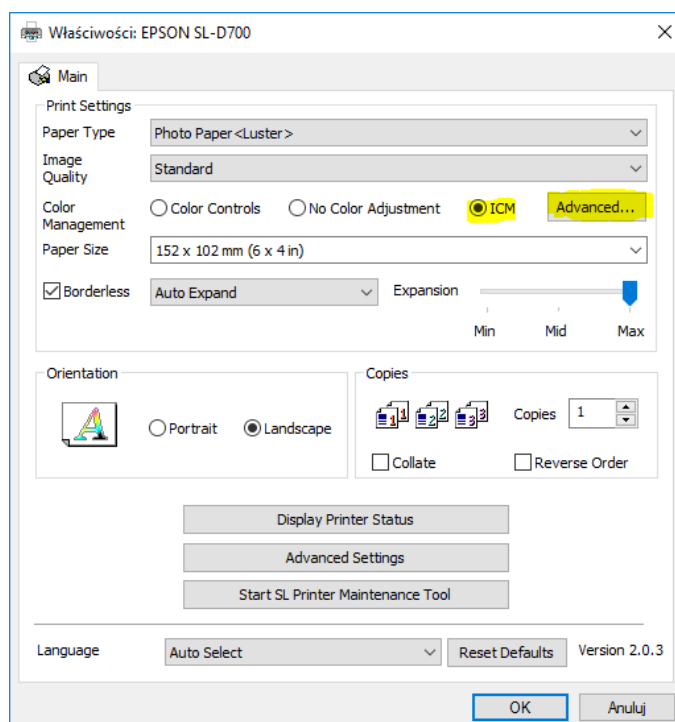
Click the **Add** button to add your profile.

After this set as the **Default Profile**.

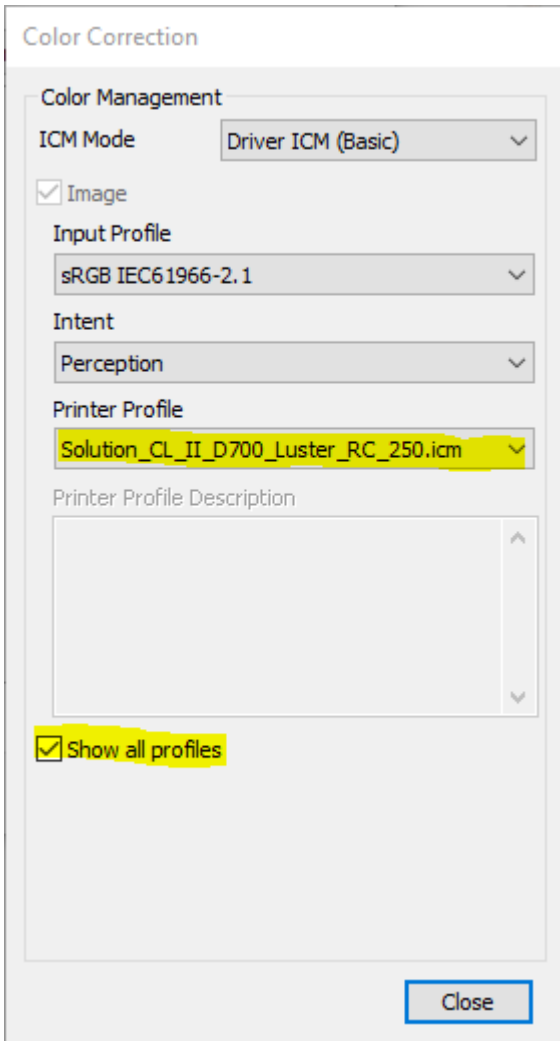
Close the window



In the driver settings, chose the **ICM** and click the **Advanced** button



In the next window set the check box: **show all profiles** and chose the right profile. Close the window.



After this, set the other settings and click **OK**.

3. If you want to add a profile to your OS, click the right mouse button at the name of profile and chose **Install profile**.